



Rhode Island Energy™

a PPL company

Frequently Asked Questions – East Greenwich High School L190-G185 115 kV Transmission Lines Upgrade Project (August 2023)

Why is this project happening?

To accept the additional electricity that will be generated by a soon-to-be-built offshore wind farm, Rhode Island Energy must complete a series of upgrades to portions of the local electrical infrastructure. This includes upgrading the wires to allow for additional carrying capacity, as well as installing new structures (poles) designed to hold the upgraded wiring.

How long is the work expected to take?

Work began in summer 2023 and is expected to be complete by the end of 2024. Final restoration along the project route is anticipated for summer 2025.

What are the typical work hours on the high school property?

The regular project hours are Monday-Saturday, 7:00am – 5:00pm. There may be situations in which work will need to take place outside of those hours, in which case we'll coordinate closely with the appropriate town officials.

Will the work create a significant level of noise?

Certain aspects of the work will generate significant noise, primarily during the new pole foundation drilling activities. However, we will work closely with town officials to ensure that any activities which generate higher levels of noise do not conflict with activities taking place on the fields. The drilling typically takes a couple of days per location, so we do not anticipate drilling adjacent to the fields taking more than a couple of weeks to complete.

When will the work located on East Greenwich High School property be completed?

The installation of the new poles is expected to be complete in early fall 2023 with new wires being run in spring 2024. Because these poles carry two transmission lines on a single pole (versus one pole for each line), construction activities must be carefully coordinated and timed to maintain electrical service to this part of the Rhode Island and to ensure the safety of our crews.

Will the timber matting be in place for the entirety of construction?

Most of the matting will remain in place until the new wires are installed in spring 2024. RI Energy will make an effort to remove any matting that is no longer being used as soon as possible.

How will this work impact the use of the practice athletic fields?

While a small portion of the fields adjacent to the project footprint may not be accessible while the project is ongoing, the fields will still be largely available for high school and town recreational activities. RI Energy has worked closely with East Greenwich town officials to

develop a plan that will protect athletes and members of the public while using the fields. This includes the installation of temporary fencing to avoid any unauthorized persons from entering the construction area.

Will there be any times that the practice athletic fields cannot be used?

No. The fields may be used at any time.

Will the fields need to be repaired once the project is done?

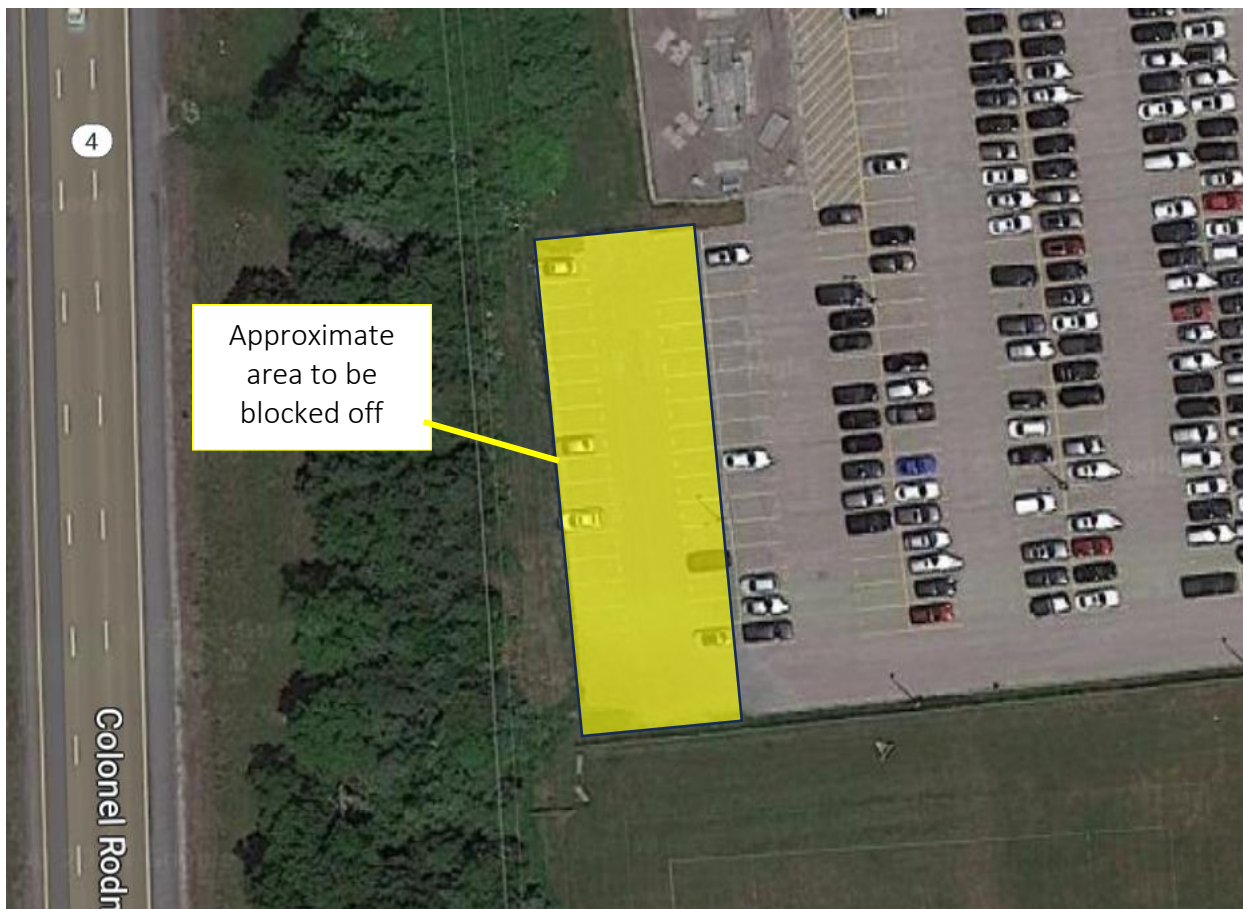
We anticipate repairs will be necessary to restore the grass surface and possibly the irrigation system. RI Energy will work closely with the Town on the restoration.

Will the cross-country course be impacted in any way?

No. While there are some areas south of the practice athletic fields (Fry Brook Recreation Area) where portions of the trails will be inaccessible, we do not anticipate any areas in which the cross-country course will be unavailable.

Will there be any impact to traffic flow or the parking lots during construction?

We do not anticipate any impact to traffic flow on the school property, particularly during drop off and pick up times. There will be some impact to the parking lot adjacent to the practice athletic fields where the project is taking up at least one row of spaces at the back of the lot. This area will be clearly marked for everyone's safety.



How will RI Energy alert drivers – particularly inexperienced drivers – of work taking place?

Signage will be installed to alert all visitors of the presence of heavy equipment and to drive with caution. Additional safety measures will be taken when equipment is moving across the property and while materials are being delivered.

Where can I find more information about the project?

For more information, please visit the project website at www.g185-l190upgrades.com.

How can I contact the project team if I have a question or concern?

You can reach our Stakeholder Relations team at info@g185-l190upgrades.com or by calling our project hotline at 401-234-0447.